

LEARNING & TEACHING

Opening the School Gate Engaging Families

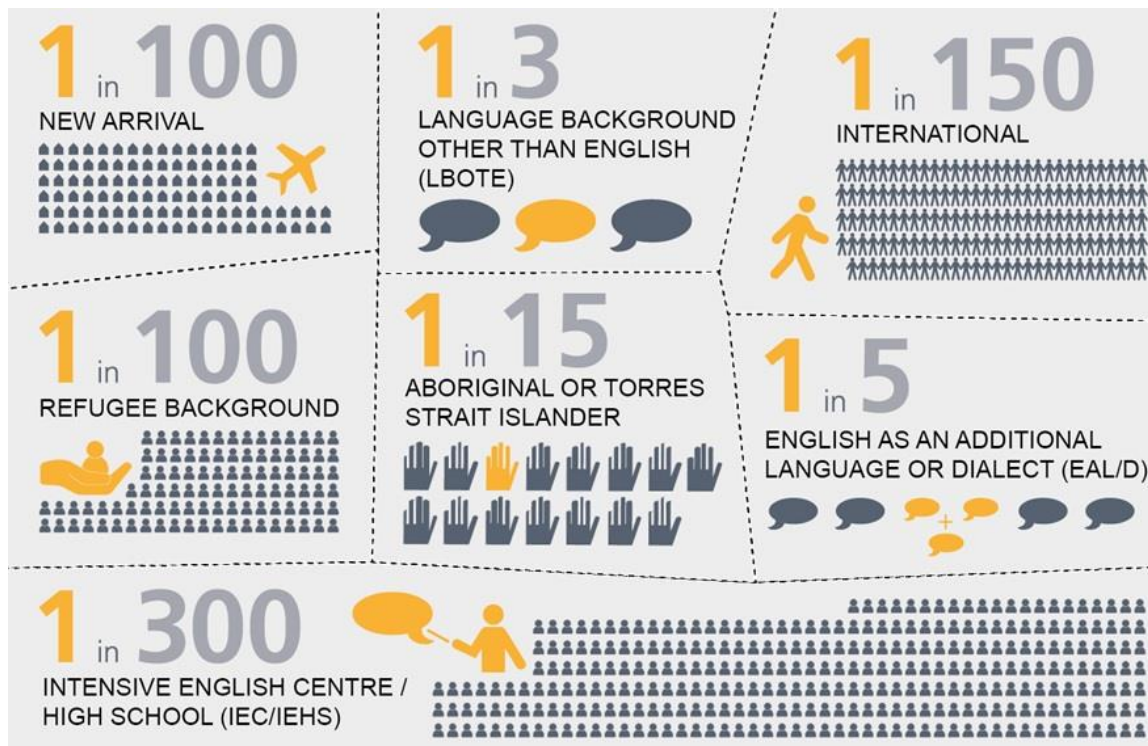


SCHOOLS - THE HUB OF COMMUNITIES



CULTURAL DIVERSITY IN NSW PUBLIC SCHOOLS

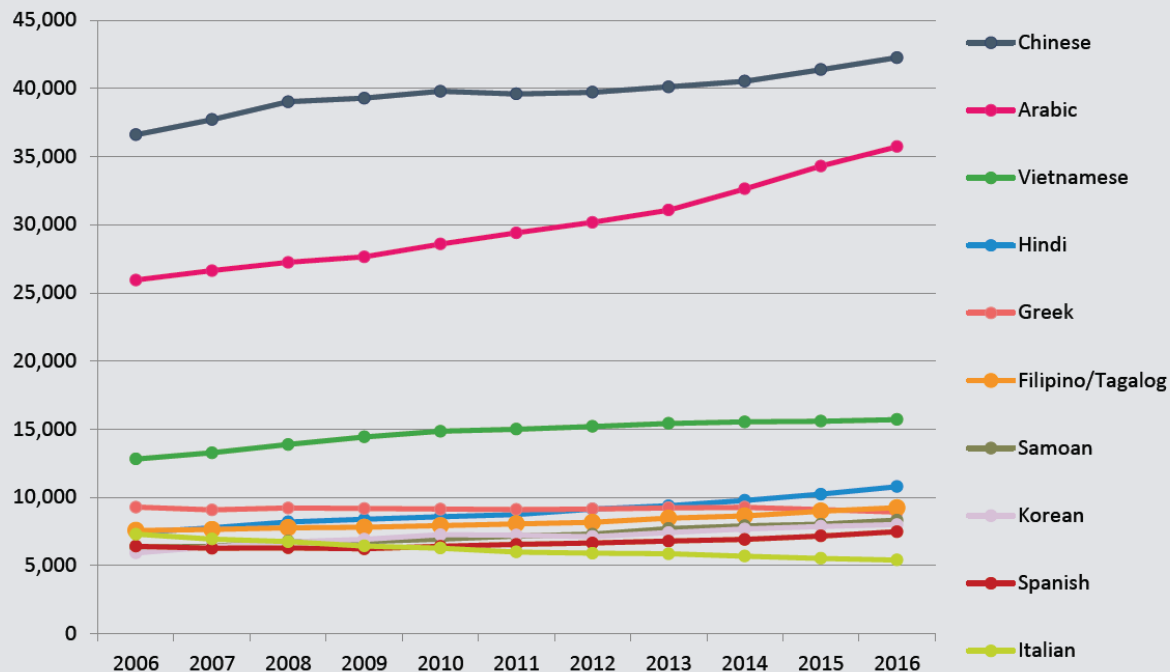
[HTTPS://WWW.CESE.NSW.GOV.AU/PUBLICATIONS/STATISTICAL-PUBLICATIONS](https://www.cese.nsw.gov.au/publications/statistical-publications)



LANGUAGE DIVERSITY IN NSW

Figure 2

Top ten language background other than English, 2006-2016



CESE Bulletin Issue 17 – Schools: Language Diversity in NSW, 2016



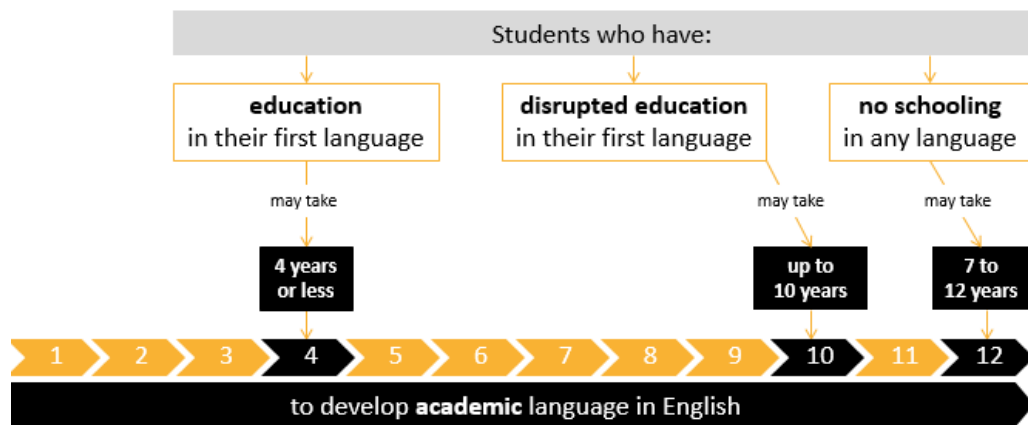
HOW DO WE SUPPORT STUDENTS IN SCHOOLS?

- Refugee support leaders
- EAL/D teaching support
- Bilingual support - SLSO
- RAM - targeted (individual refugee) student support
- Counselling support
- Transition programs (Community Hubs, Beginning School Well)
- Targeted programs – group counselling programs, mentoring, tutoring, work readiness
- Professional learning resources (Executive, Teachers)



LEARNING LANGUAGE

How long does it take to learn English as a second language?



— Thomas and Collier, *School Effectiveness for Language Minority Students* (1997)



CHALLENGES

- Different life experiences
- Different cultural knowledge
- Disrupted or limited schooling
- Impact of torture and trauma
- Resettlement challenges
- Need to learn English
- limited knowledge of educational and career choices
- difficulty navigating TAFE pathways/ tertiary entrance pathways
- pressure from families who may have limited understanding of systems
- difficulty accessing information and resources available (many available online)



OPENING THE SCHOOL GATE

- Ensure that all parents, carers and communities have access to information about NSW public schools.
- Ensure they are able to participate equitably in school activities and collaborate in the decision making processes through:
 - Interpreting services
 - Translations
 - Parent programs
 - Specialist staff (CLO, SLSO)
 - Professional learning and resources
 - Consultation



COMMUNITY PARTNERSHIPS

- STARTTS
- Settlement Services International
- Navitas
- NSW Refugee Health Service
- The Refugee Council of Australia
- Australian Literacy and Numeracy Foundation
- The Australian Red Cross
- St Vincent de Paul
- Department of Immigration and Border Protection
- Job Quest
- Migrant resource centres



SUPPORT IN ACTION



Supporting refugee communities (5:59) Interviews with refugee students explore how schools are working with the broader community to support refugee students. [Transcript: Supporting refugee communities](#)

Roads to refuge > [Community](#)