



Family &  
Community  
Services

# Care & Cultural Planning

Cultural Shift 2017

The care and cultural plan



**Dean Schafer**  
**Family and Community Services**

**11 August 2017**

# Acknowledgement of Country

*“I would like to begin by acknowledging the Traditional Custodians of the land on which we meet. I would also like to pay respect to the Elders past, present and emerging as well as extending that respect to other Aboriginal people here today.”*

# Why the change?

- Changes to the Children and Young Persons (Care and Protection) Act in October 2014
- Improve how we record our assessments of permanency options for children
- Current template was not meeting the needs of the Children's Court or FACS caseworkers
- Further improvements to maintain cultural identity and connections of children and young people

# How?

## CARERS



Children & Young People

Carers

Parents



Consulted

FACS Advisory Groups



Peak Bodies & NGO's



FACS staff & Legal Services

Create



Children's Court

Aboriginal Legal Service (ALS)



# Care and Cultural Planning

The new redesigned template:

- Introduces a FACS state-wide approach to care and cultural planning
- Embeds the Permanency Pathways
- Reinforces the Aboriginal Child Placement Principles
- Introduces two new Cultural Plans:
  - **Aboriginal and Torres Strait Islander Cultural Plan**
  - **Multicultural Plan**

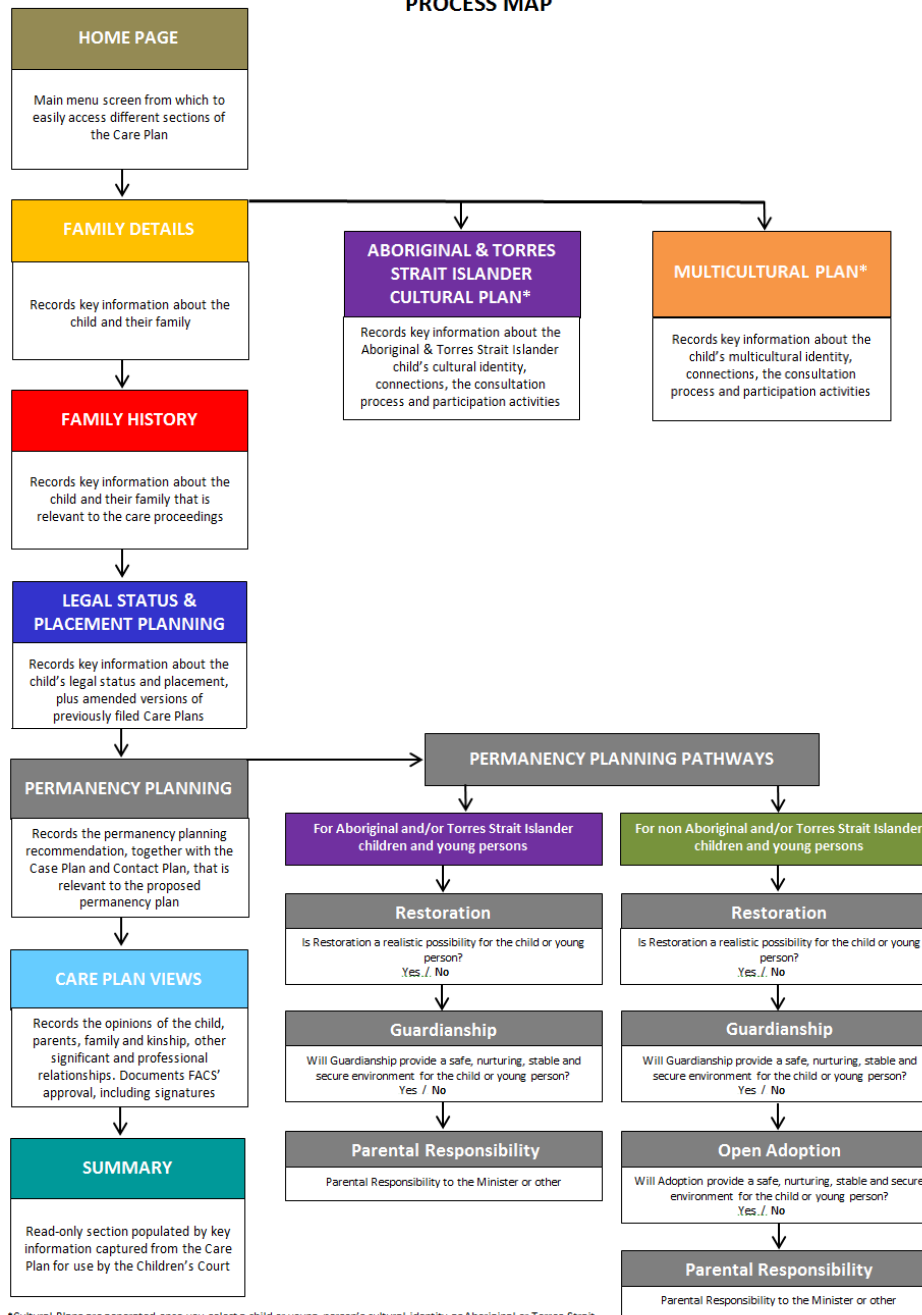


# Developing Cultural Plans



- Driven by family, kin and community
- Consultation is underpinned by the Care and Protection Practice Standards
- Developed in partnership with all significant people in the child's life
- FACS and NGOs have a responsibility to share only the appropriate and relevant information with other agencies/departments

# CARE & CULTURAL PLANNING PROCESS MAP



\* Cultural Plans are generated once you select a child or young person's cultural identity as Aboriginal or Torres Strait Islander and/or as Multicultural in the Family Details section, or when you select to display them from the Home Page.





# Where are we at now?

- Completed training for FACS frontline staff
- Operational from 9 January 2017
- Resources and webinar available on the FACS website [www.facs.nsw.gov.au/careplan](http://www.facs.nsw.gov.au/careplan)
- Monitoring and Evaluation Framework
- Integration into ChildStory





Family &  
Community  
Services



# Thank you

Further information and resources are available at [www.facs.nsw.gov.au/careplan](http://www.facs.nsw.gov.au/careplan)

You can direct any further questions or feedback to the **Safe Home for Life Reform** email address:

[SafeHomeForLifeReform@facs.nsw.gov.au](mailto:SafeHomeForLifeReform@facs.nsw.gov.au)

